

An aerial photograph of a dense forest of evergreen trees covered in a thick layer of snow. The trees are scattered across a light-colored, snow-covered ground, creating a textured, monochromatic scene. The perspective is from directly above, looking down on the forest canopy.

Vermont Commission on Women 2018

Vermont Department of Corrections

Kim Bushey, Program Services Director

Theresa Stone, Chittenden Correctional Facility, Superintendent

Infra structure Matters

Corrections – Unified System

Probation - Supervision authority rests with Court/Judiciary

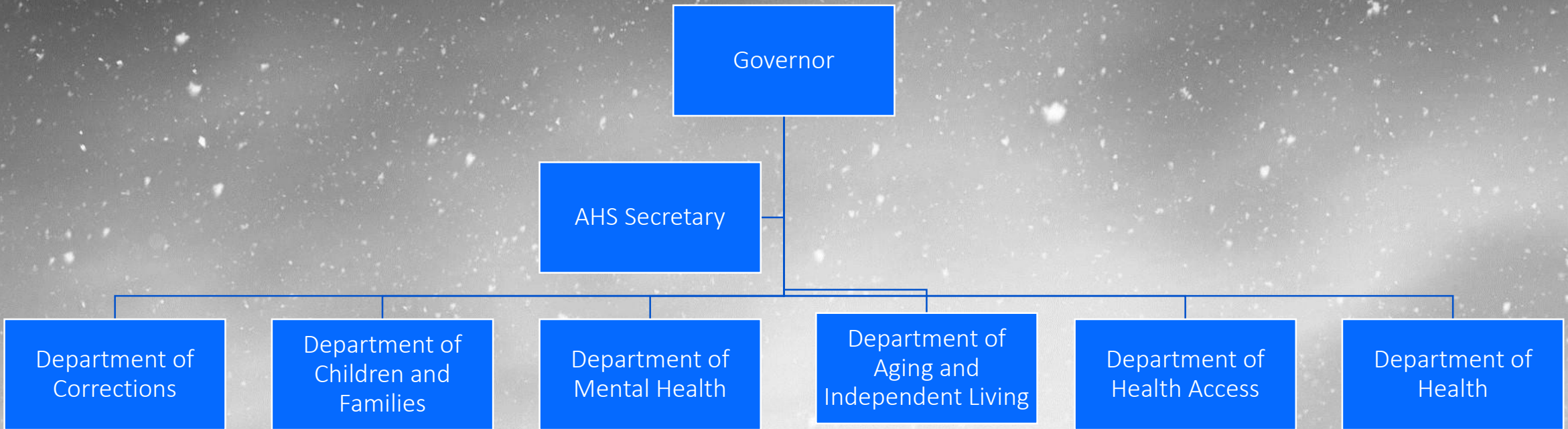
Detention – Authority rests with the Court

Jail – sentenced to less than 1 year, incarcerated

Prison – sentenced to more than 1 year, incarcerated

Furlough – sentenced to serve incarcerated sentence, meets DOC criteria for community supervision.

Parole – Supervision authority rests with Parole Board



Legal Status Snapshot 8.28.18

Detained	27
Detained w/ Hold	1
Hold	9
Sentenced	105
Sentenced w/Hold	2
Sentenced w/Detained	12
Grand Total	156

Crime type

F/Serious	49
F/Person	07
F/Property	28
F/Drug	11
F/MotorV	05
F/Other	08
M/Person	02
M/Property	02
M/MotorV	06

Comparison

Unique Individuals receiving Mental Health and/or Medication Assisted

October 2017

- % of patients at CRCF on MH Caseload (MH Meds) **110/154**
- % of patients across system on MH Caseload **690/1794**
- % patients at CRCF on MAT **8/154**
- % patients across the system on MAT **84/1794**

October 2018

- % patients at CRCF on MH Caseload (MH meds) **117/159**
- % of patients across system on MH caseload **700/1765**
- % of patients at CRCF on MAT **82/159**
- % of patients across system on MAT **478/1765**

Kids A Part Program

212 unique incarcerated mothers

96 new to SFY19

90% screened reported having minor children or were pregnant (132) **no information on custodial parent or active parenting at the time of incarceration

Discussing Intimate Violence and Accessing Support (DIVAS)

436 unique individuals (63% were first time users)

- Lack ability, skills and knowledge to navigate social systems of care
- Increased numbers in mental distress
- Homelessness and lack of stable/affordable housing
- 60 individuals identified by the program as potential victims of sex and labor trafficking

